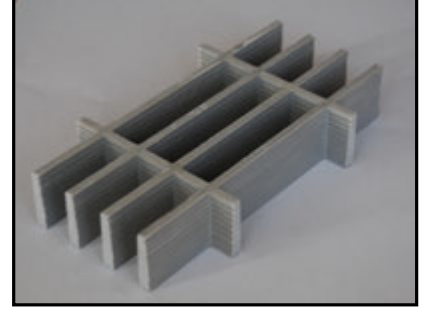
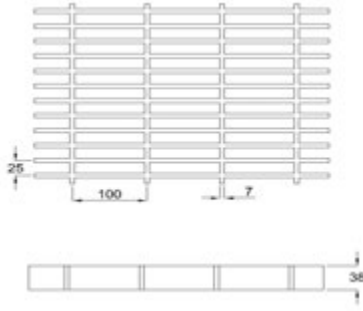


**PULGRATE-M03**

**TEKNİK ÖZELLİKLER**

Açık Alan	68,00%
Gözenek Ebadı	25 x 100 mm
Taıyııcı Bar Geni li i	7 mm
Yakla ık A ırlık	18,25 kg/m <sup>2</sup>
Taıyııcı Barlar Arası Mesafe	100 mm
1 metredeki Bar Sayısı	11
Panel Ebadı	1010 x 4010



**YÜK - SEHİM TABLOSU**

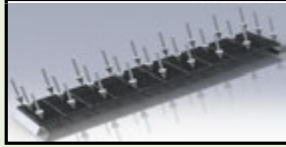
El= 12462 x 106 Nmm<sup>2</sup>

Genislik= 1000mm

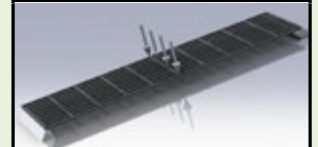
El=12462 x 106 Nmm<sup>2</sup>

Genislik= 1000mm

**YAYILI YÜK**



**NOKTASAL YÜK**



AÇIKLIK (mm)	Maksimum Yük (N/mm)	FB	Sehim (mm)				
			L/100	L/150	L/180	L/240	L/360
250	1866,65	FB	612,52	408,35	340,29	255,22	170,15
500	466,66	FB	76,57	51,04	42,54	31,90	21,27
750	207,41	FB	22,69	15,12	12,60	9,45	6,30
1000	116,67	FB	9,57	6,38	5,32	3,99	2,66
1500	51,85	FB	2,84	1,89	1,58	1,18	0,79
2000	29,17	FB	1,20	0,80	0,66	0,50	0,33

AÇIKLIK (mm)	Maksimum Yük (N)	FB	Sehim (mm)				
			L/100	L/150	L/180	L/240	L/360
250	233331,0	FB	95706,91	63804,61	53170,51	39877,88	26585,25
500	116665,5	FB	23926,73	15951,15	13292,63	9969,47	6646,31
750	77777,0	FB	10634,10	7089,40	5907,83	4430,88	2953,92
1000	58332,7	FB	5981,68	3987,79	3323,16	2492,37	1661,58
1500	38888,5	FB	2658,53	1772,35	1476,96	1107,72	738,48
2000	29166,4	FB	1495,42	996,95	830,79	623,09	415,39

**KİMYASAL DAYANIM TABLOSU**

K MYASAL	% Kons.	ZOF TAL K POLYESTER		V N LESTER	
		Maksimum Çalı ma Sıcaklı ı		Maksimum Çalı ma Sıcaklı ı	
		23 °C	65 °C	23 °C	71 °C
Asetik Asit	0-25	R	R	R	R
Asetik Asit	25-50	R	NR	R	R
Etil Alkol	10	NR	NR	R	65
Etil Alkol	100	NR	NR	R	NR
Hidroklorik Asit	0-37	NR	NR	R	R
Sitrik Asit	ALL	R	R	R	R
Sodyum Hidroksit	5-25	NR	NR	R	65
Sodyum Hidroksit	50	NR	NR	R	65
Sülfrik Asit	0-30	R	R	R	R
Sülfrik Asit	30-50	NR	NR	R	R
Sülfrik Asit	50-70	NR	NR	R	49

\* Farklı ortamlar için firmamızla temasa geçiniz.

**UYGULAMA RESMİ**

