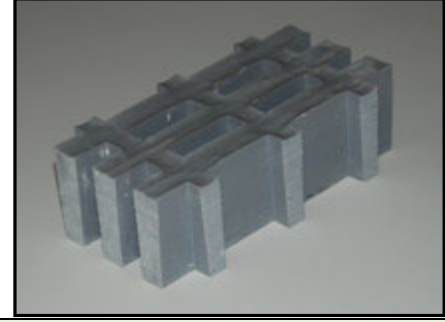
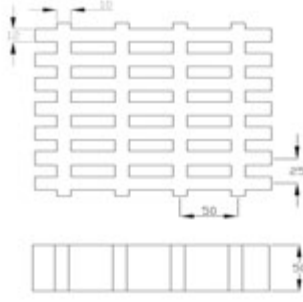


**PULGRATE-M08**

**TEKNİK ÖZELLİKLER**

Açık Alan	41,00%
Gözenek Ebadı	50 x 25 mm
Taıyıcı Bar Geni li i	12 mm
Yakla ık A ırlık	46,60kg/m <sup>2</sup>
Taıyıcı Barlar Arası Mesafe	50 mm
1 metredeki Bar Sayısı	80
Panel Ebadı	1220 x 1880



**YÜK - SEHİM TABLOSU**

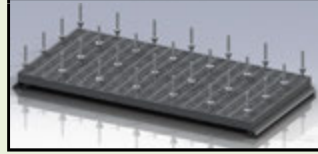
EI= 83765 x 10<sup>6</sup> Nmm<sup>2</sup>

Genislik= 1000 mm

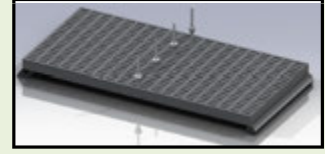
EI= 83765 x 10<sup>6</sup> Nmm<sup>2</sup>

Genislik= 1000mm

**YAYILI YÜK**



**NOKTASAL YÜK**



AÇIKLIK (mm)	Maksimum Yük (N/mm)	F <sub>B</sub>	Sehim (mm)				
			L/100	L/150	L/180	L/240	L/360
250	5632,92	F <sub>B</sub>	4117,26	2744,84	2287,36	1715,52	1143,68
500	1408,23	F <sub>B</sub>	514,66	343,10	285,92	214,44	142,96
750	625,88	F <sub>B</sub>	152,49	101,66	84,72	63,54	42,36
1000	352,06	F <sub>B</sub>	64,33	42,89	35,74	26,81	17,87
1500	156,47	F <sub>B</sub>	19,06	12,71	10,59	7,94	5,29
2000	88,01	F <sub>B</sub>	8,04	5,36	4,47	3,35	2,23

AÇIKLIK (mm)	Maksimum Yük (N)	F <sub>B</sub>	Sehim (mm)				
			L/100	L/150	L/180	L/240	L/360
250	704115,40	F <sub>B</sub>	643321,2	428880,8	357400,6	268050,5	178700,3
500	352057,70	F <sub>B</sub>	160830,29	107220,19	89350,16	67012,62	44675,08
750	234705,13	F <sub>B</sub>	71480,13	47653,42	39711,18	29783,39	19855,59
1000	176028,85	F <sub>B</sub>	40207,57	26805,05	22337,54	16753,16	11168,77
1500	117352,57	F <sub>B</sub>	17870,03	11913,35	9927,80	7445,85	4963,90
2000	88014,43	F <sub>B</sub>	10051,89	6701,26	5584,39	4188,29	2792,19

**KİMYASAL DAYANIM TABLOSU**

K MYASAL	% Kons.	ZOF TAL K POLYESTER		V N LESTER	
		Maksimum Çalı ma Sıcaklı ı		Maksimum Çalı ma Sıcaklı ı	
		23 °C	65 °C	23 °C	71 °C
Asetik Asit	0-25	R	R	R	R
Asetik Asit	25-50	R	NR	R	R
Etil Alkol	10	NR	NR	R	65
Etil Alkol	100	NR	NR	R	NR
Hidroklorik Asit	0-37	NR	NR	R	R
Sitrik Asit	ALL	R	R	R	R
Sodyum Hidroksit	5-25	NR	NR	R	65
Sodyum Hidroksit	50	NR	NR	R	65
Sülfirik Asit	0-30	R	R	R	R
Sülfirik Asit	30-50	NR	NR	R	R
Sülfirik Asit	50-70	NR	NR	R	49

\* Farklı ortamlar için firmamızla temasa geçiniz.

**UYGULAMA RESMİ**

